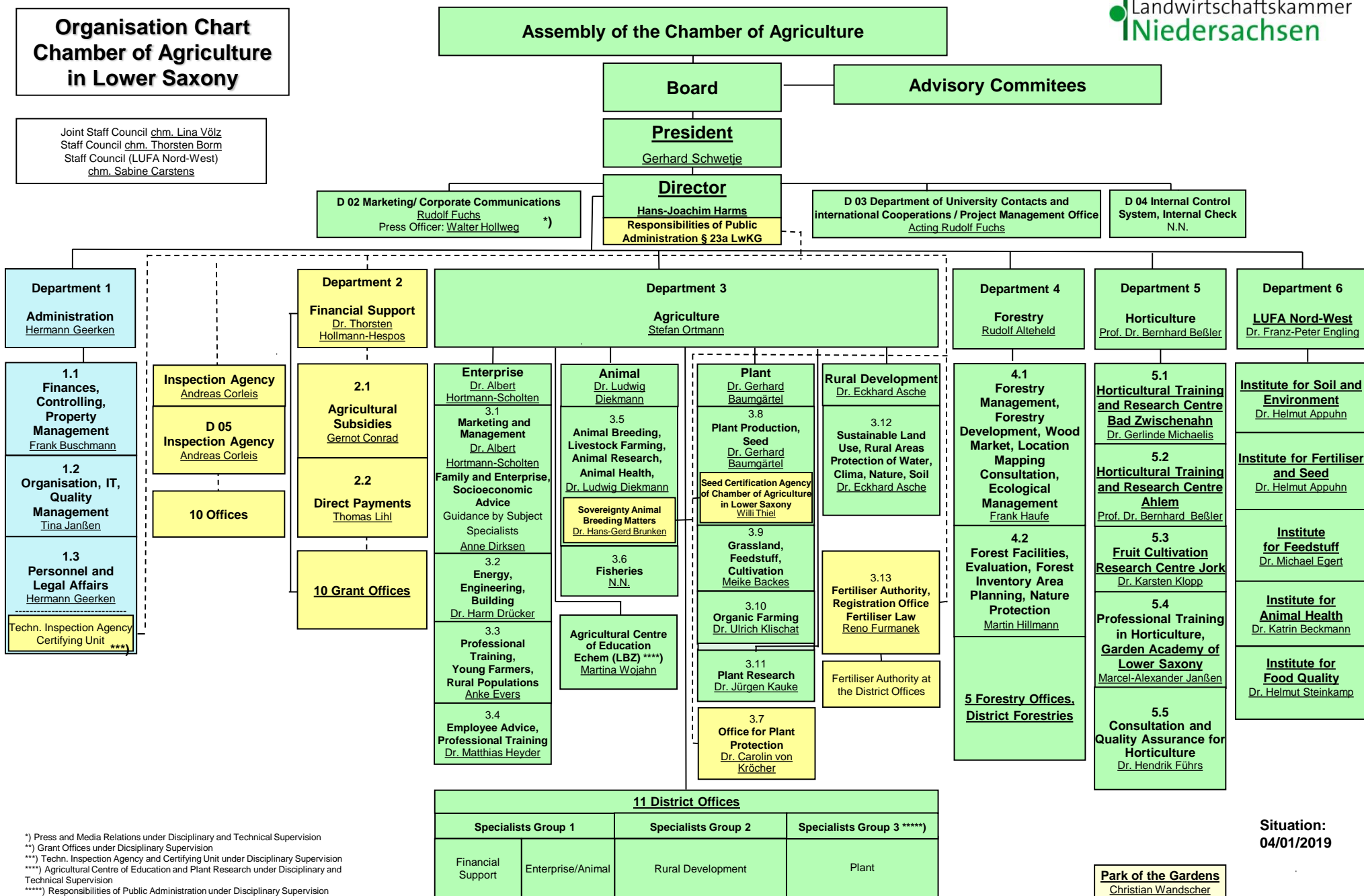


# Organisation Chart Chamber of Agriculture in Lower Saxony

Joint Staff Council *chm. Lina Völz*  
Staff Council *chm. Thorsten Borm*  
Staff Council (LUFA Nord-West)  
*chm. Sabine Carstens*



\*) Press and Media Relations under Disciplinary and Technical Supervision  
\*\*) Grant Offices under Disciplinary Supervision  
\*\*\*) Techn. Inspection Agency and Certifying Unit under Disciplinary Supervision  
\*\*\*\*) Agricultural Centre of Education and Plant Research under Disciplinary and Technical Supervision  
\*\*\*\*\*) Responsibilities of Public Administration under Disciplinary Supervision